

ART TIPS + FILE TYPES

CHEAT



SHEET

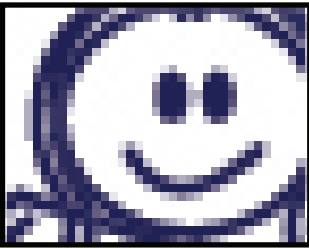
BITMAP FILES



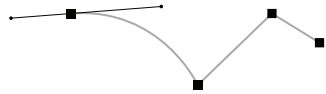
Made up of tiny pixels in which each contain specific color information and do not scale well.

FILE FORMATS:

.jpg, .bmp, .png, .tiff, .psd, .giff



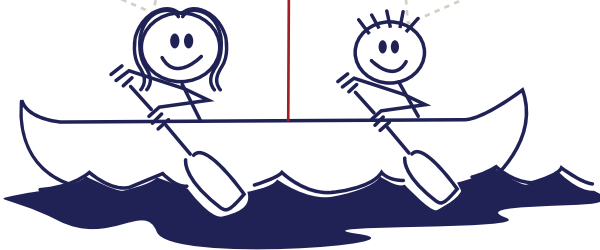
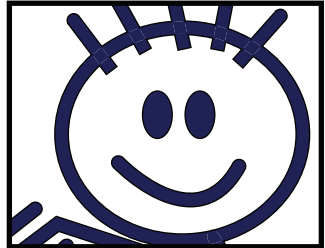
VECTOR FILES



Made up of points and anchors, that can be scaled to ANY size without losing quality.

FILE FORMATS:

.eps, .pdf, .ai, .crd, .svg



In an effort to best serve you, vector files are preferred when working with any type of logos, corporate identities, screen printing or larger scale printing projects. Bitmaps are file types best used for enhancing print or photography layout designs, web pages, etc.

We ask that you convert all text outlines or also include any applicable fonts when sending us final artwork. By simply saving bitmap files as a vector, it will NOT convert the images for us.